

### PARTS LIST

<u>Index</u>	<u>Description</u>	<u>Qty.</u>
1	Muffler Packing	2
2	Strap, Stainless	2
3	Pop Rivets, Stainless	10

### ADDITIONAL PARTS REQUIRED

Exhaust Gaskets, BMW PN 18-12-1-342-969	2
---	---

**NOTE:** Your dealer has the necessary tools and knowledge to perform this repack procedure safely and efficiently.

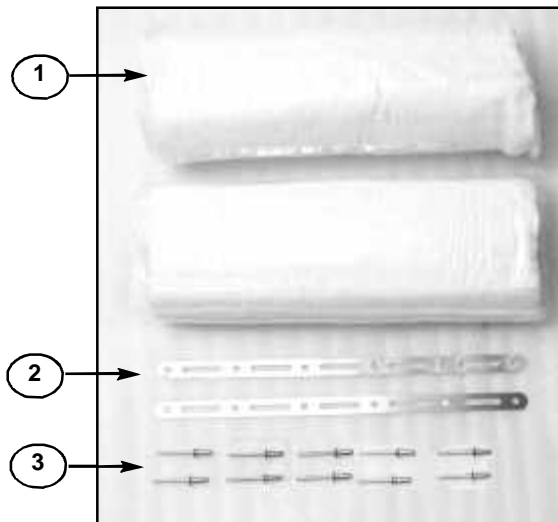
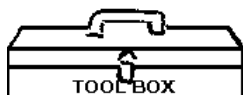


Figure 1



Center Punch  
Drift Punch, 3/16" Shank  
Drill Electric or Air  
Drill Bit for Rivet Removal or  
1/8" Drill Bit and 1/4" Drill Bit  
Needle Nose Pliers  
Ball Peen Hammer  
Air Powered Pop Rivet Tool  
Rubber Mallet

We recommended wearing safety glasses during installation.



Figure 2

### **PREPARATION**

1. Position the motorcycle securely on its side stand or a work stand.
3. Remove exhaust from motorcycle. Refer to the Z4001 exhaust instruction manual 10-117711.
4. Split exhaust between muffler and intermediate pipe.

## INSTALLATION

1.Center punch rivet centers at muffler end. (Center punch.) Figure 3.

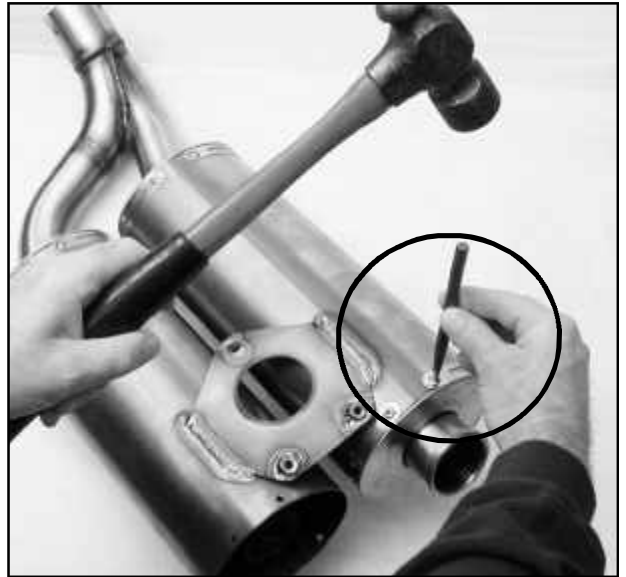


Figure 3

2. Drill heads off rivets. (Drill and Rivet Removal.) Figure 4.



Figure 4

3. Push rivets into muffler. (Drift, 3/16" shank.) Figure 5.

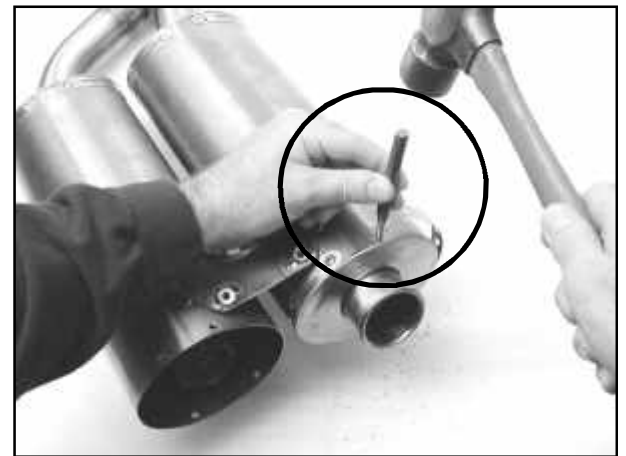


Figure 5

4. Remove end cap. (Drift punch, 3/16" shank.)  
Figure 6.

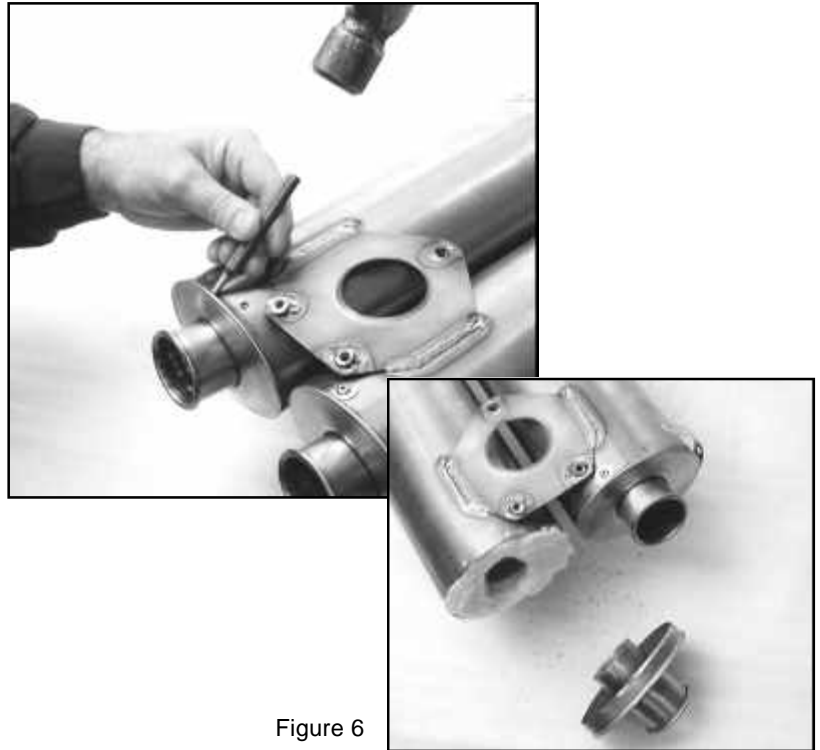


Figure 6

5. Pull packing out of muffler. (Needle nose pliers.)  
Figure 7.



Figure 7

6. Insert new muffler packing.
- a) leave plastic wrap and core tube in place
  - b) insert packing into cannister while you pull back on plastic wrap
  - c) pull core tube out after packing is completely in



Figure 8

**7.** Reinstall the end caps. Make certain holes align. (If necessary use a rubber mallet.) Figure 9.



Figure 9

**10.** Position a rivet and one end of the strap at the bottom hole location. Rivet first position. (Air power pop rivot tool.) Figure 10.



Figure 10



**11.** Continue adding rivots in sequence from first one. Figure 11.

**12.** Reinstall exhaust assembly. Use new gaskets during installation. Make sure there are no leaks. Leaks will dramatically shorten the life of the re-pack kit. Fix all leaks before riding.

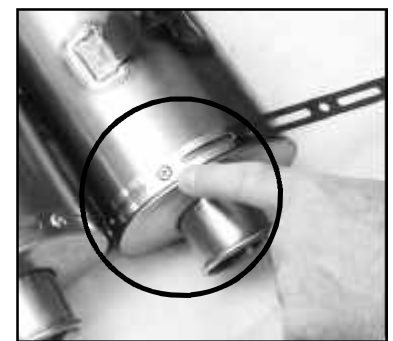


Figure 11

## MAINTENANCE

Repack the mufflers at 6000 mile (10,000 km) intervals. Discoloration can be removed from the Exhaust System with a quality metal polish. Be sure to remove all polishing compound residue from the Exhaust System before running the engine.