



Read these instructions carefully and thoroughly before beginning work.

Before installing the accessory, carefully consider whether one possesses the necessary technical skills and workshop tools to complete the installation properly. Otherwise, any BMW Motorcycle Retailer will be glad to install this accessory.



Allen head wrench #4, 5

Contents of kit:	
EURO shield	One
EURO shield bracket L/R	One of each
Cover plate	2
Gasket	4
Allen head bolt M6 x 40	4
Screw M6 x 12	4

Cautionary rules and measures which can protect the driver or other persons from injury or death.	Special notes and cautionary measures which can prevent damage to the motorcycle. Failure to observe these can result in nullification of the warranty.	Tips for facilitation of operation, control and adjustment, as well as maintenance work.



Installation instructions:

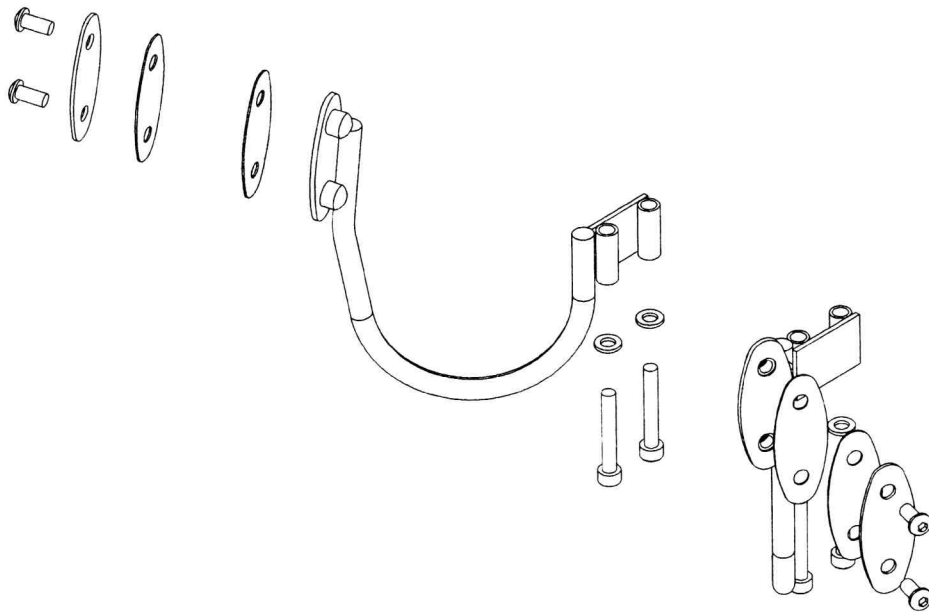
Note:



- The R 1200 C auxiliary center stand is recommended for ease of installation.
BMW Tool Number 001 550
- **BMW Part number: 90 88 6 001 550**

	1. Remove the two screws holding the headlight mount casting to the top triple clamp from the right side only.
Note:	Work one side at the time for ease of installation. Do not remove left and right headlight mount screws at the same time.
	2. Position the right side EURO shield mounting bracket at the location from where the two screws were removed. Start two screws (M6 x 40) through the shield mount sleeves, the headlight mount casting and into the triple clamp.
	3. Repeat step 2 when installing the left side bracket and tighten all four bolts.
Note:	Tightening torque specification is 5 foot pounds (7 Nm).
	5. Carefully position the EURO shield above the instrument housing.
	6. Place the rubber gaskets between the EURO shield and the mounting bracket. Place the second set of gaskets between the shield and outside cover plates.
Note:	Work one side at the time for ease of installation.
	7. Install the shield mounting screws through the outside plate of the shield, into the captive nuts located on the windshield brackets. Careful not to damage the shield. Repeat this procedure when installing the left side of the EURO shield.

	8. Tighten all four screws (M6 x 12) until snug.
Attention: 	Careful not to over tighten screws and cause damage to the EURO shield.
Note: 	Notes for servicing: <ul style="list-style-type: none"> Recheck bolts and connections during every scheduled maintenance.



Part Number	Description
Z2301	Complete Kit w/ Shield
34-344025-000	Left Bracket
34-344026-000	Right Bracket
Bag #558	Hardware / Gaskets